

## **APPENDIX 4**

Radiography of metal concretions from 49-SIT-963  
Texas A&M Marine Conservation Laboratory

Jim Jobling, Lab Manager

RADIOGRAPHIC ENTRY SHEET

PROJECT NEVA 2016/15

USE A DIFFERENT ENTRY SHEET FOR EACH PROJECT.

PAGE 1

Artifact #	Exposure (KV)	Time (secs)	Algorithm	Evaluation	Entry #	Operator	Date
UA2016-063-072	72 kV	.25	AP6	Underexposed - art out of frame	1	MD	9/16/16
UA2016-063-072	68 kV	.25	AP2	Good - need another angle	2	MD	9/16/16
UA2016-063-072	68 kV	.25	AP6	Good - <del>163</del> 167	3	MD	9/16/16
UA2016-063-072	68 kV	.25	AP1	Good - 187	4	MD	9/16/16
UA2016-063-066	72 kV	.25	AP6	Excellent - 163 → art. out of frame	5	MD	9/16/16
UA2016-063-066	72 kV	.25	AP6	Excellent - 167	6	MD	9/16/16
UA2016-063-003	72 kV	.25	AP6	Excellent - 167	7	MD	9/16/16
UA2016-063-030	72 kV	.25	AP6	Good - 175	8	MD	9/16/16
UA2016-063-030	68 kV	.25	AP6	Good - 163	9	MD	9/16/16
UA2016-063-015	68 kV	.25	AP6	Good - 156 - okay - other angle	10	MD	9/16/16
UA2016-063-015	72 kV	.25	AP6	Good - 163	11	MD	9/16/16
UA2016-063-015	72 kV	.25	AP6	Okay - 156	12	MD	9/16/16
UA2016-063-005	72 kV	.25	AP6	Poor - 163 - out of frame	13	MD	9/16/16
UA2016-063-005	68 kV	.25	AP6	Good - 163	14	MD	9/16/16
UA2016-063-005	64 kV	.25	AP6	Good - 163	15	MD	9/16/16
UA2016-063-058	64 kV	.25	AP6	163 - out of frame	16	MD	9/16/16
UA2016-063-058	64 kV	.25	AP6	163 - good	17	MD	9/16/16
UA2016-063-006	64 kV	.25	AP6	163 - out of frame	18	MD	9/16/16
UA2016-063-006	64 kV	.25	AP6	166 - out of frame	19	MD	9/16/16
UA2016-063-006	64 kV	.25	AP6	171 - fuzzy image, lower mA	20	MD	9/16/16
UA2016-063-006	66 kV	.25	AP6	Good - 163	21	MD	9/16/16
UA2016-063-017	66 kV	.25	AP6	Good - 163	22	MD	9/16/16
UA2016-063-017	66 kV	.25	AP6	Good - 163	23	MD	9/16/16
UA2015-237-236	72 kV	.25	AP6	Good - 163	24	MD	9/16/16
UA2015-237-236	72 kV	.25	AP6	Good - 163	25	MD	9/16/16
UA2015-237-233	72 kV	.25	AP6	Okay - 156	26	MD	9/16/16
X UA2015-237-233	75 kV	.25	AP6	Good - 163	27	MD	9/16/16

S163  
S200

RADIOGRAPHIC ENTRY SHEET

PROJECT NEVA 2016/15

USE A DIFFERENT ENTRY SHEET FOR EACH PROJECT.

PAGE 2

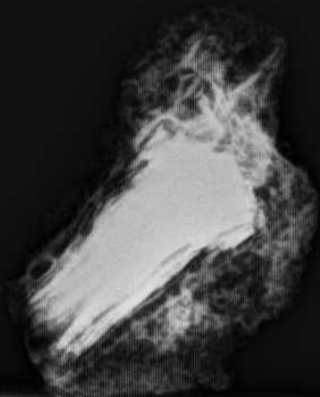
Artifact #	Exposure (KV)	Time (secs)	Algorithm	Evaluation	Entry #	Operator	Date
WA2015-237-233	7.5 KV	.25	AP6	Good - 163	28	MD	9/16/16
WA2015-237-231	7.5 KV	.25	AP6	Good - 163	29	MD	9/16/16
X WA2015-237-231	7.5 KV	.25	AP6	Okay - 156	<del>30</del> 30	MD	9/16/16
WA2015-237-238	7.5 KV	.25	AP6	Good - 163	31	MD	9/16/16
WA2015-237-238	7.2 KV	.25	AP6	Good - 163	32	MD	9/16/16
WA2015-237-238	7.2 KV	.25	AP6	Good - 163	33	MD	9/16/16
WA2015-237-238	7.2 KV	.25	AP6	Good - 163	34	MD	9/16/16
WA2015-237-235	7.2 KV	.25	AP6	Good - 163	35	MD	9/16/16
UA2015-237-227	7.2 KV	.25	AP6	Good - 163	36	MD	9/16/16
WA2015-237-227	7.6 KV	.25	AP6	Good - 163	37	MD	9/16/16
WA2015-237-232	7.6 KV	.25	AP6	Good - 163	38	MD	9/16/16
WA2015-237-232	7.6 KV	.25	AP6	Okay - 163	39	MD	9/16/16
UA2015-237-232	6.8 KV	.25	AP6	Okay - 156	40	MD	9/16/16
WA2015-237-243	7.3 KV	.25	AP6	Good - <del>163</del> 159	41	MD	9/19/16
WA2015-237-243	7.3 KV	.25	AP6	Good - 163	42	MD	9/19/16
UA2015-237-229	7.2 KV	.25	AP6	Good - 163	43	MD	9/19/16
WA2015-237-229	7.2 KV	.25	AP6	Good - 163	44	MD	9/19/16
WA2015-237-264	7.2 KV	.25	AP6	Okay - 163 - not in frame	45	MD	9/19/16
WA2015-237-264	7.2 KV	.25	AP6	Good - 163	46	MD	9/19/16
WA2015-237-264	7.2 KV	.25	AP6	Good - 163	47	MD	9/19/16
UA2015-237-239	7.2 KV	.25	AP6	Good - 163	48	MD	9/19/16
UA2015-237-241	7.2 KV	.25	AP6	Excellent - 163	49	MD	9/19/16
WA2015-237-242	7.2 KV	.25	AP6	Good - 156	50	MD	9/19/16
WA2015-237-244	7.2 KV	.25	AP6	Good - 163	51	MD	9/19/16
WA2015-237-244	7.2 KV	.25	AP6	Good - 163	52	MD	9/19/16
WA2015-237-240	7.2 KV	.25	AP6	Good - 163	53	MD	9/19/16
WA2015-237-237	7.2 KV	.25	AP6	Excellent - 163	54	MD	9/19/16

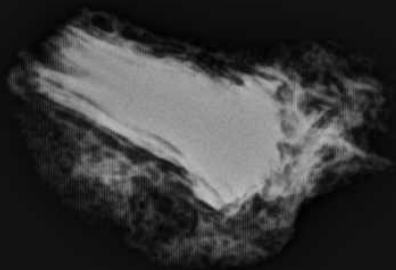


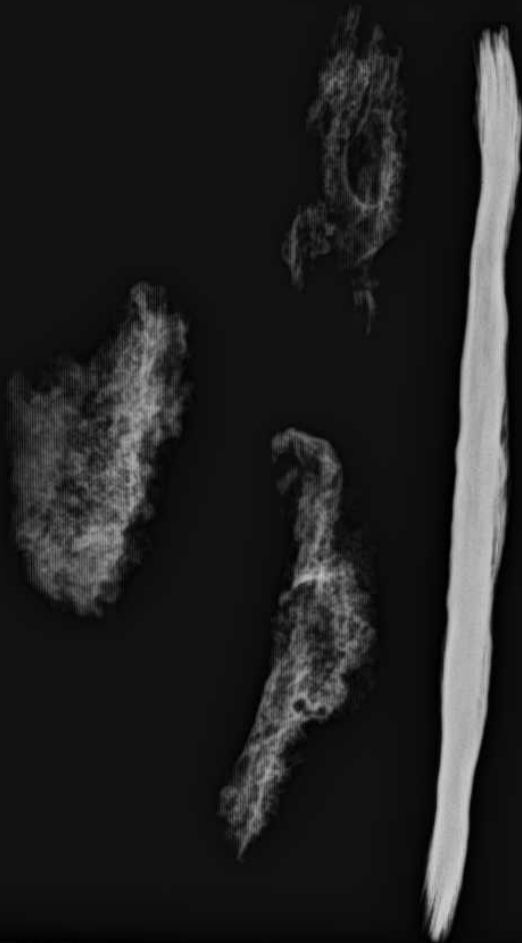
<b>Artifact Number</b>	<b>Notes</b>	<b>Location</b>	<b>Unit</b>
UA2015-237-227	Iron spike	South Block	N109/E101
UA2015-237-229	Iron spike	South Block	N108/E102
UA2015-237-231	Flattened cannister	Kitchen Terrace	N100/E101
UA2015-237-232	Iron chunk	Kitchen Terrace	MD-59
UA2015-237-233	Spoon (bowl, two fragments of handle)	Kitchen Terrace	MD-46
UA2015-237-235	Iron Spike	N of North Block	MD-73
UA2015-237-236	Iron plate with small screw	N of North Block	MD-12
UA2015-237-237	Iron ring	South Block	N109/E101
UA2015-237-238	Small iron spikes	N of North Block	MD-74
UA2015-237-239	Iron nail	South Block	N109/E102
UA2015-237-240	Iron spike	South Block	N109/E101
UA2015-237-241	Iron spike, no metal remaining	Kitchen Terrace	N100/E100
UA2015-237-242	Iron spike	North Block vicinity	MD-10
UA2015-237-243	Iron nail	South Block	N110/E101
UA2015-237-244	Iron nail	Kitchen Terrace	N100/E101
UA2015-237-245	Curved iron spike	Kitchen Terrace	N100/E101
UA2015-237-246	Curved flat iron plate	Kitchen Terrace	N100/E101
UA2015-237-247	Various iron spike fragments, chunk	Kitchen Terrace	N100/E101
UA2015-237-264	Iron spike fragments	N of North Block	MD-72

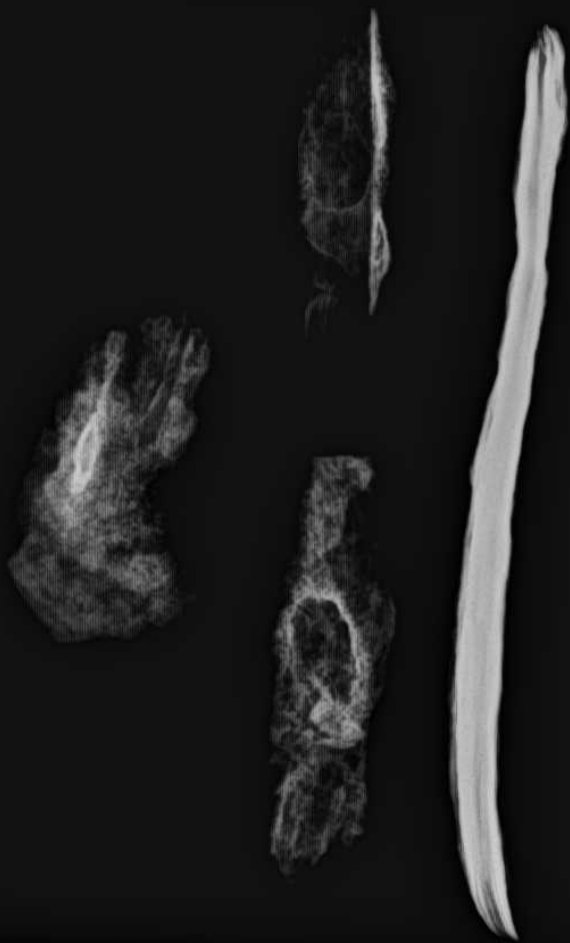
Catalog No.	Description	Dimensions, cm	MD No.	Feature	Northing	Easting	Depth	Comments
	concretion with soft wood (spruce?)							
UA2016-063-003	fragments	9.3X6.6			N102	E101	?	X-Ray: Iron spike
UA2016-063-005	fragment	5.5X3.1			N102	E101	30	X-Ray: Iron nail
UA2016-063-006	round with protruding spike, nail?	4 x 2.5			N102	E101	30	X-Ray: Small iron nail
UA2016-063-015	concretion with bone inclusions	6cmX8cm	F				0	X-Ray: Iron chunk X-Ray: Flat iron sheeting, 6 folded
UA2016-063-017	indeterminate	3.5X4	H					
UA2016-063-030	iron concretion, indeterminate				N118.10	E101.05	17	X-Ray: Iron nail, bent
UA2016-063-058	iron coffin nail				Burial Feat N134.74	E99.20	43	X-Ray: Iron nail
UA2016-063-066	iron coffin spike, broken				Burial Feat N135.06	E99.78	35	X-Ray: Iron spike
	Iron Hardare, indeterminate, recovered with cache of russian axes, broken after excavation							
UA2016-063-072			A-12				20	X-Ray: Flat iron bar

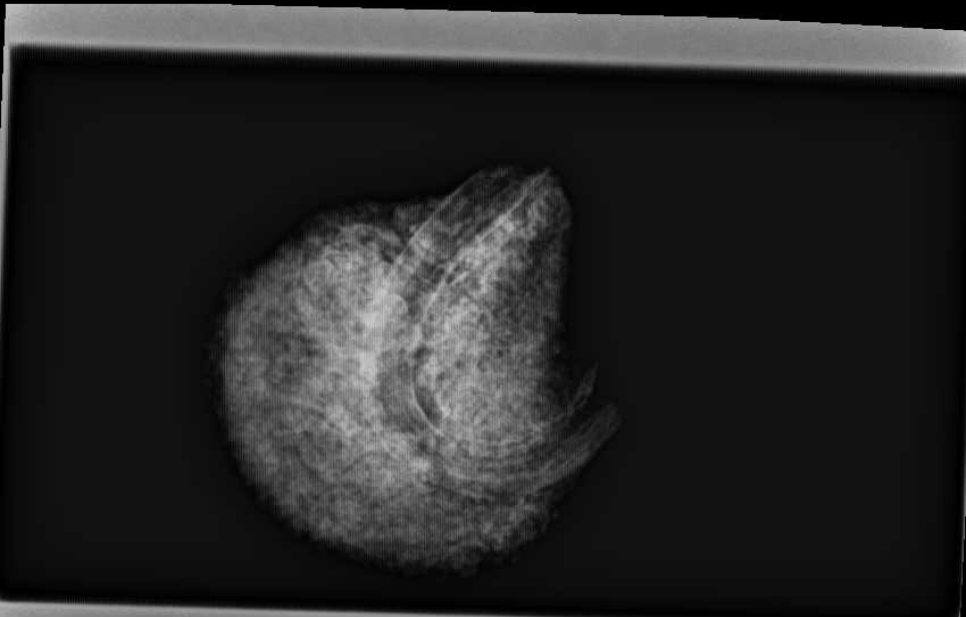
Initials	project personnel
CC	Chuck Carrig
DM/McM	Dave MacMahen
EA	Evguenia Anichtchenko
DRT	Daniel R Thompson



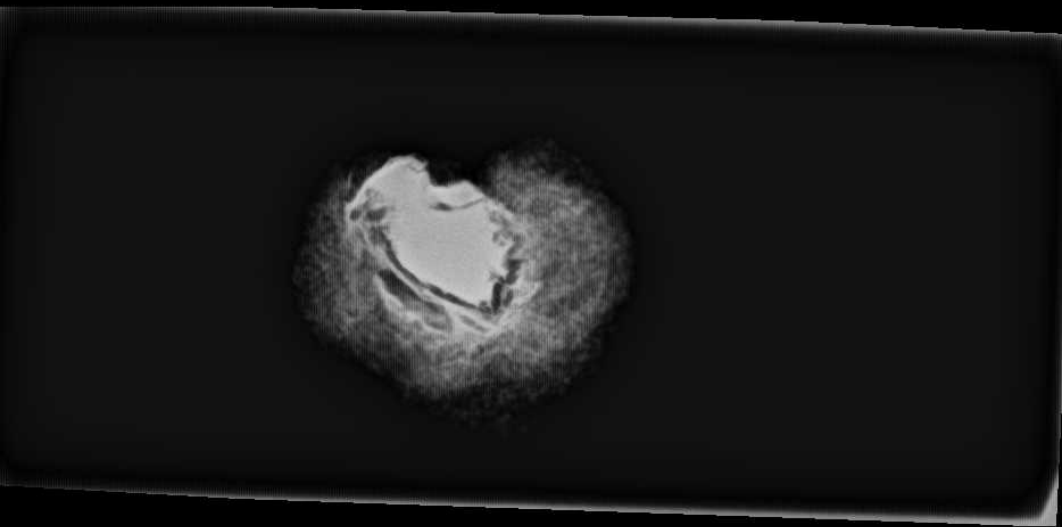


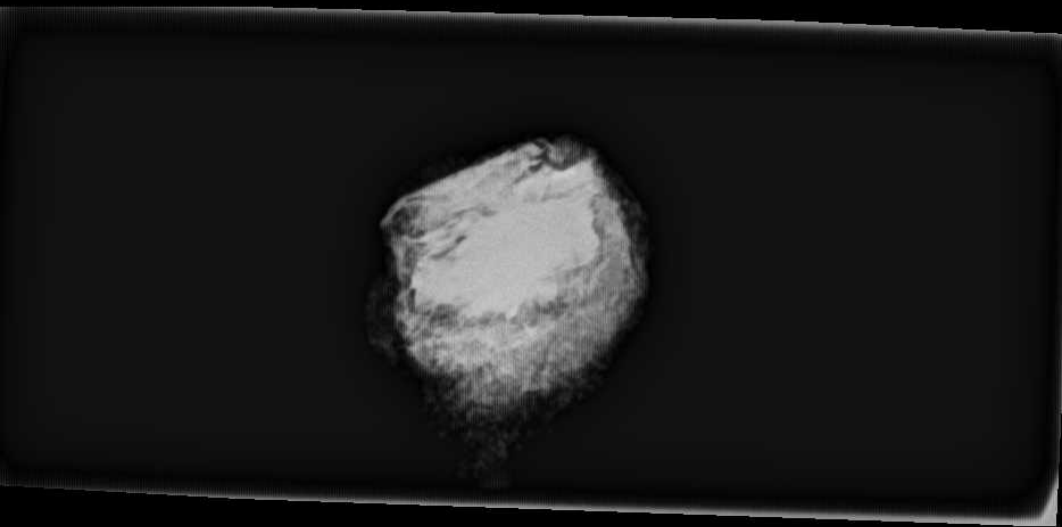










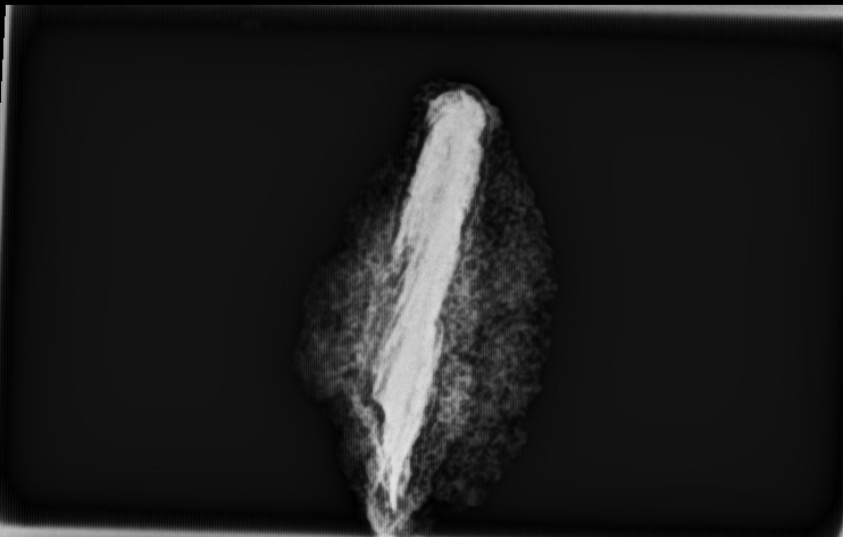


-346-



-347-



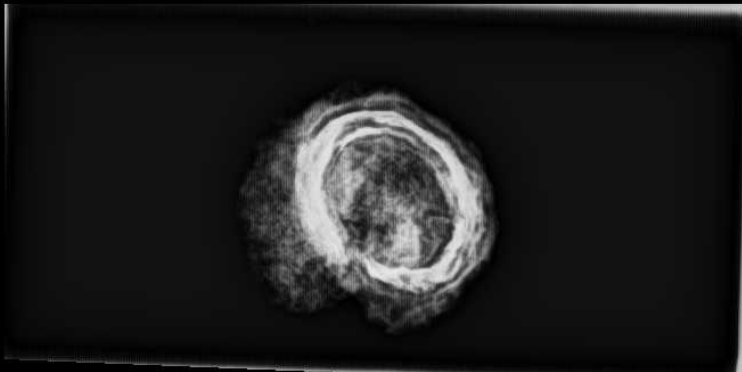




-349-

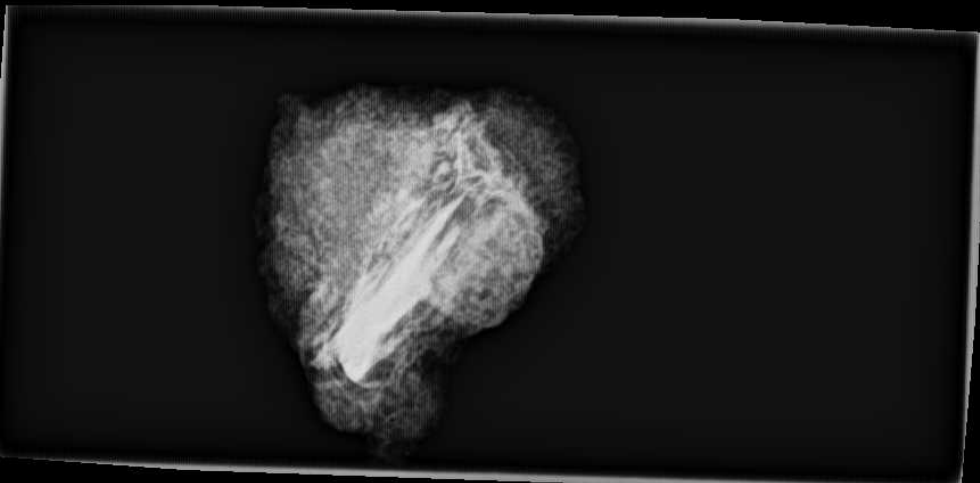
-350-

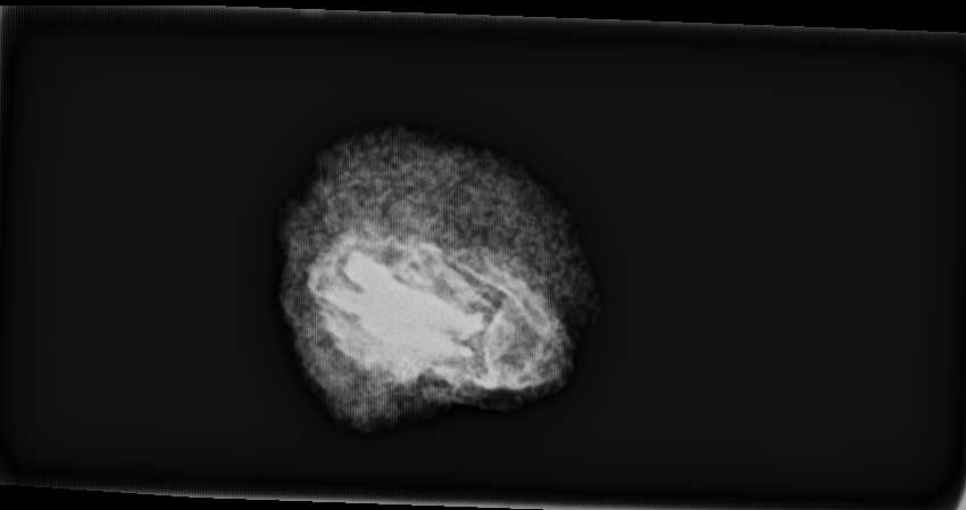


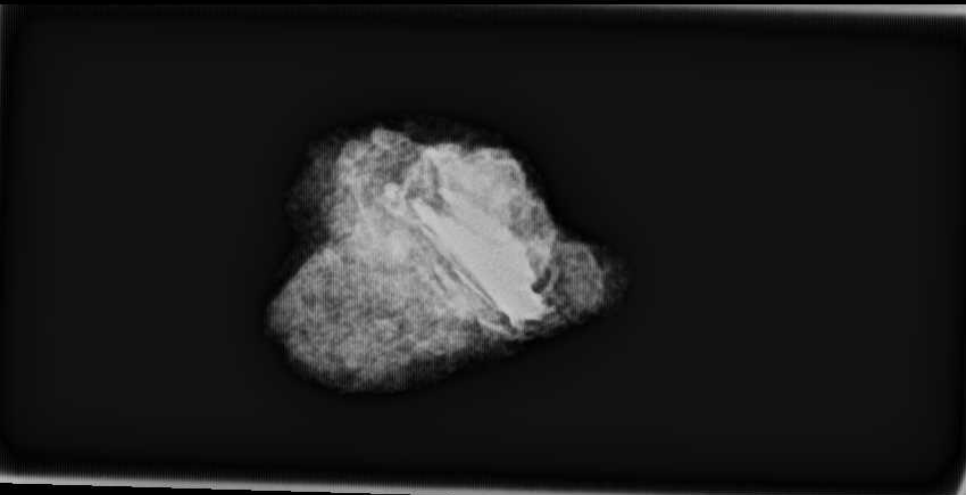


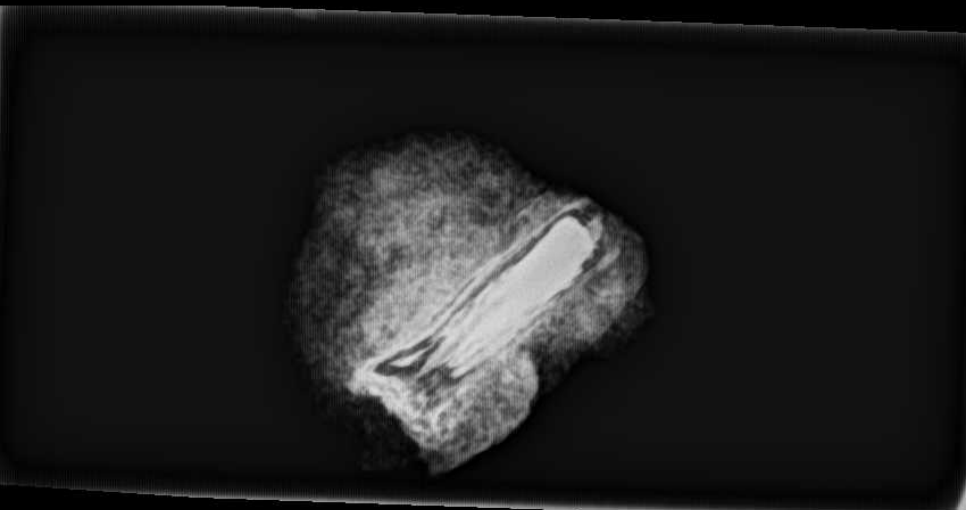


-352-



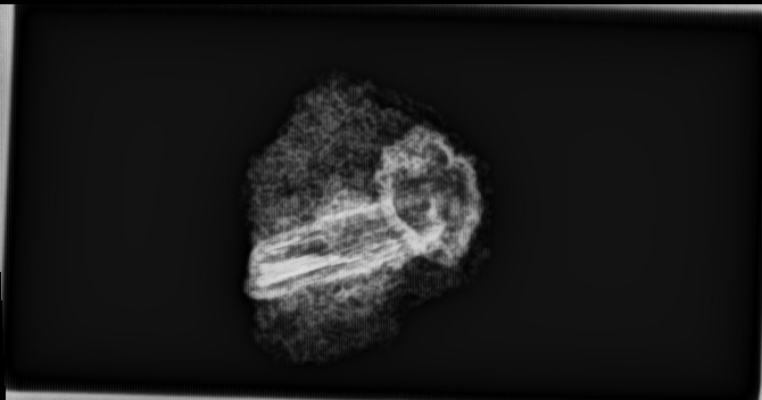




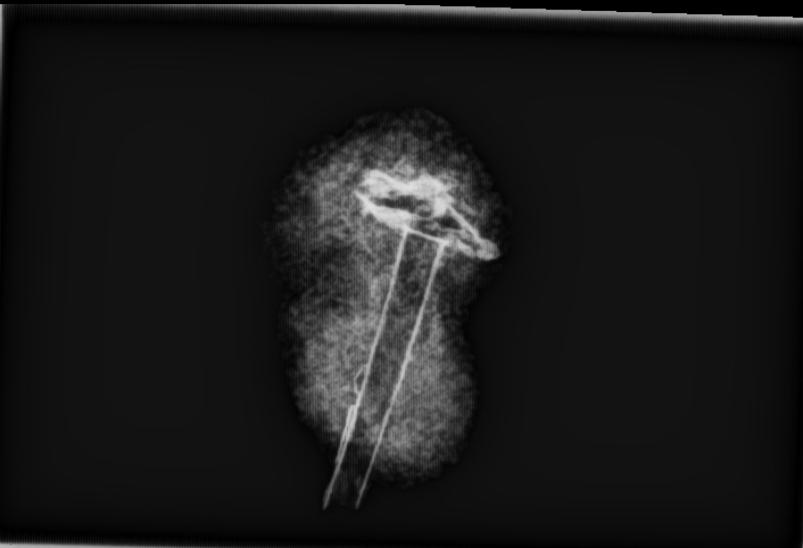


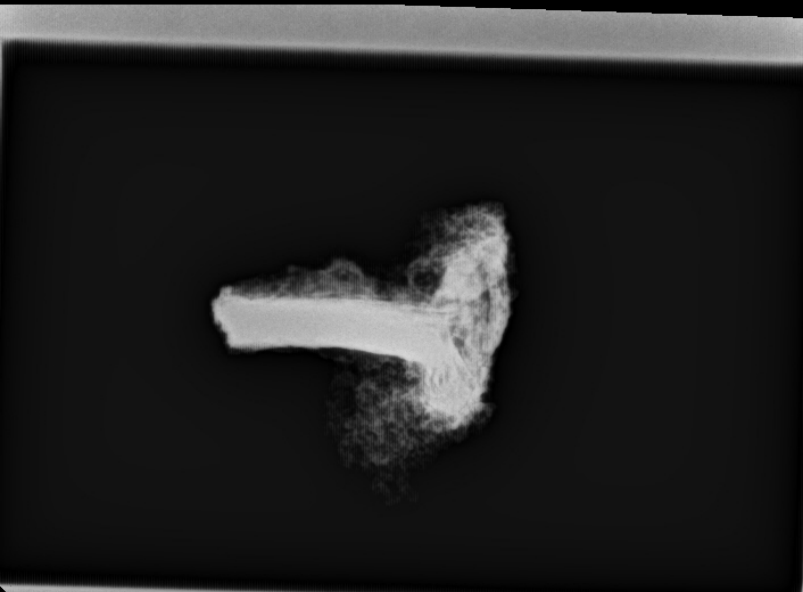
-357-





-358-



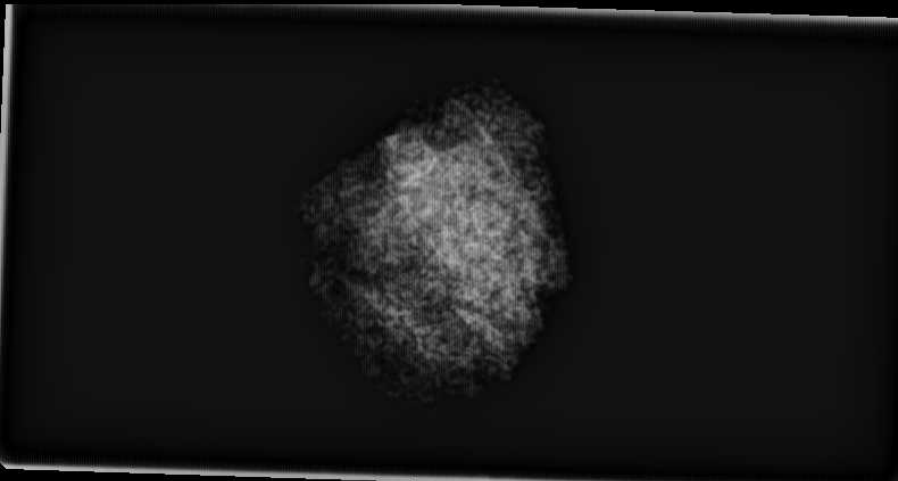


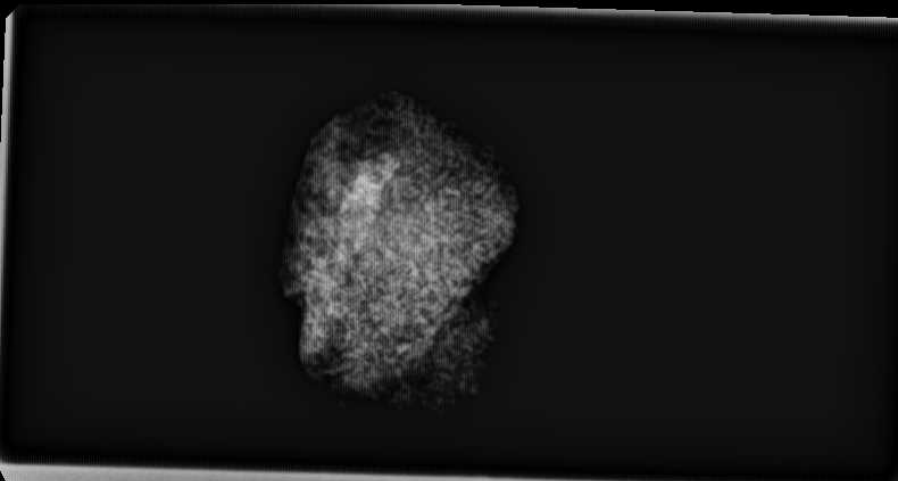


-361-

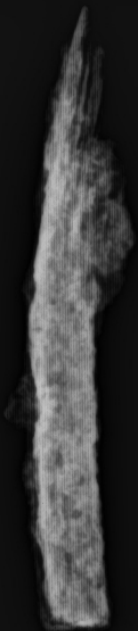


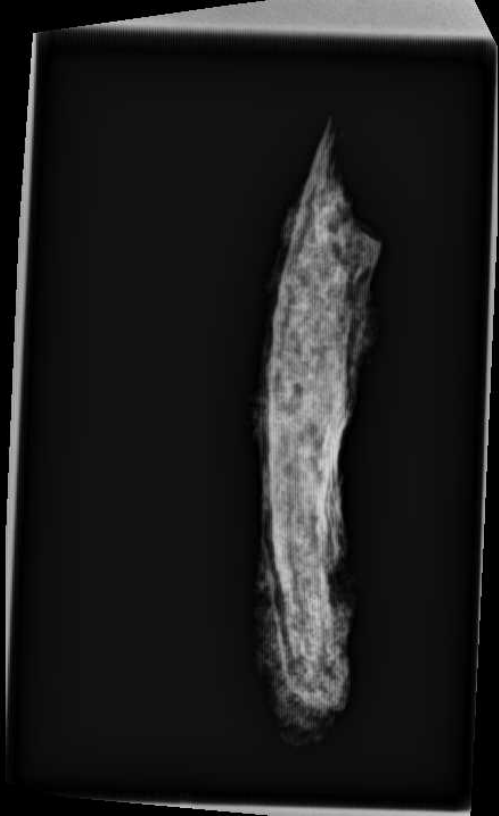
-362-





-365-

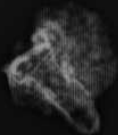




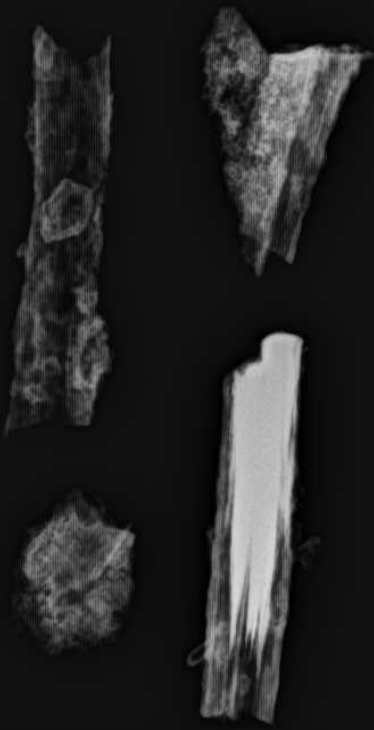
-366-



-367-



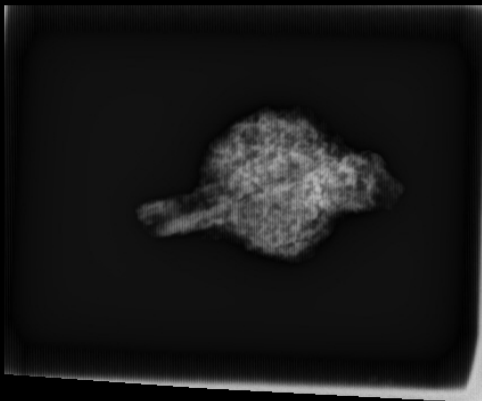




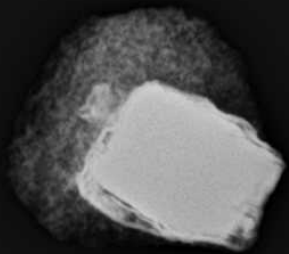


-372-

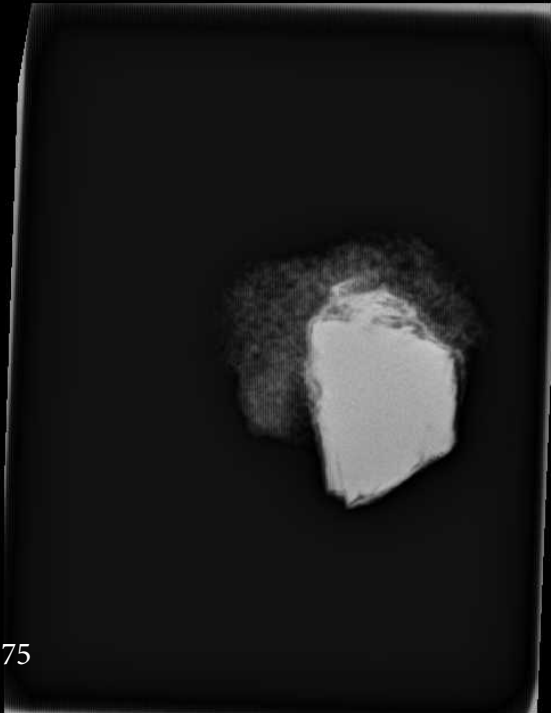




-373-

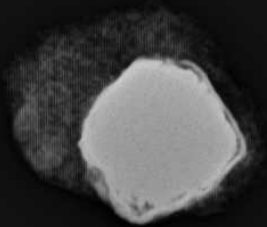


-374-



-375

-376-



-377-

A dark, irregularly shaped object, possibly a fossil or mineral specimen, centered on a black background. The object has a complex, textured appearance with some lighter, fibrous or crystalline regions. It is roughly heart-shaped or kidney-shaped, with several protrusions and indentations. The overall appearance is that of a microscopic view of a biological or geological specimen.



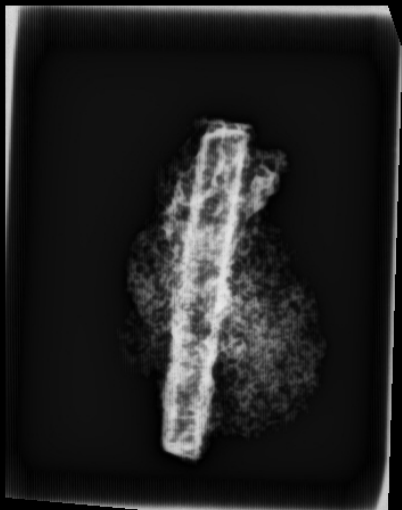
-378-



-379-

-380-





-381-

